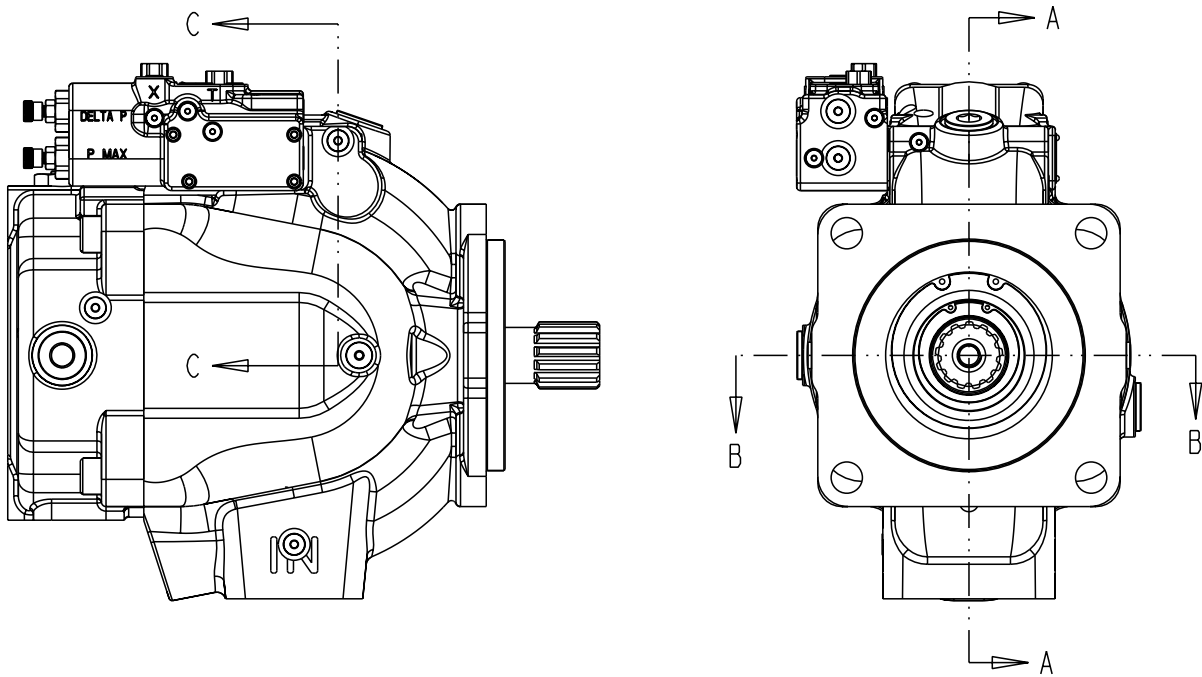
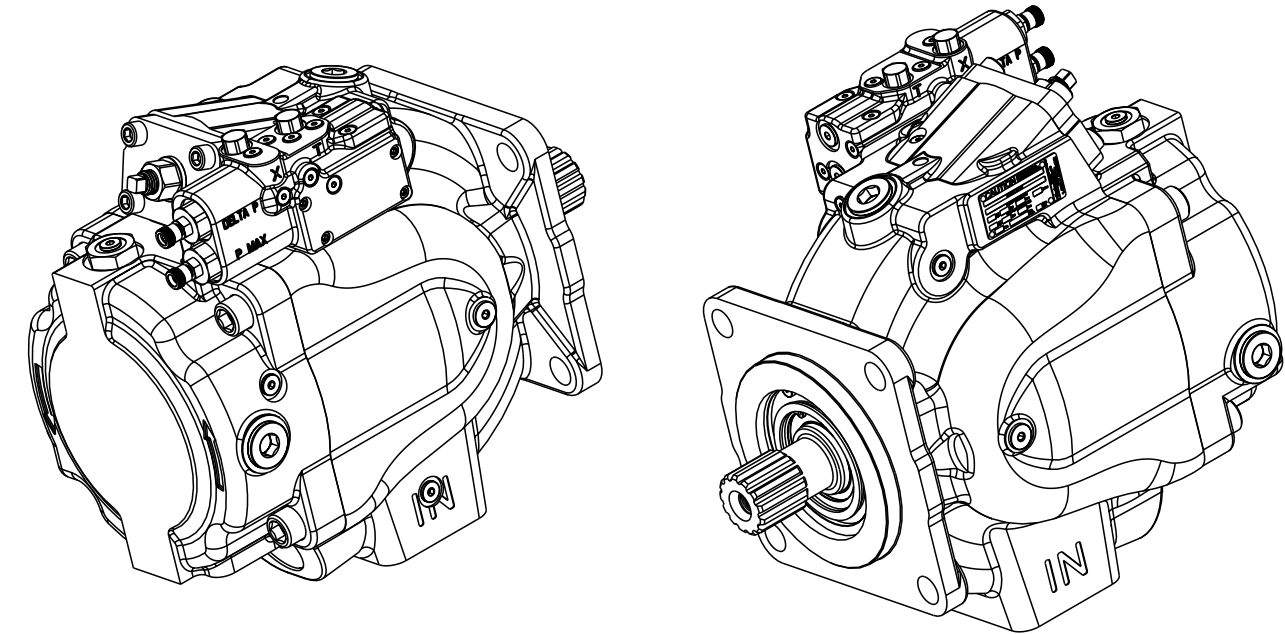


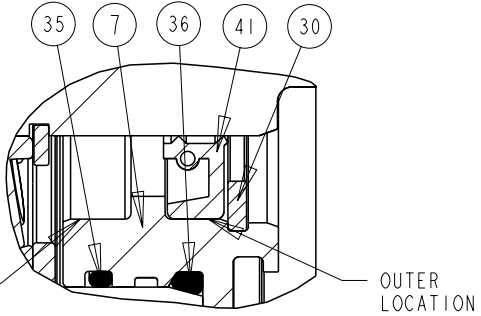
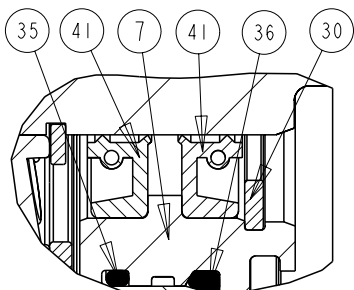
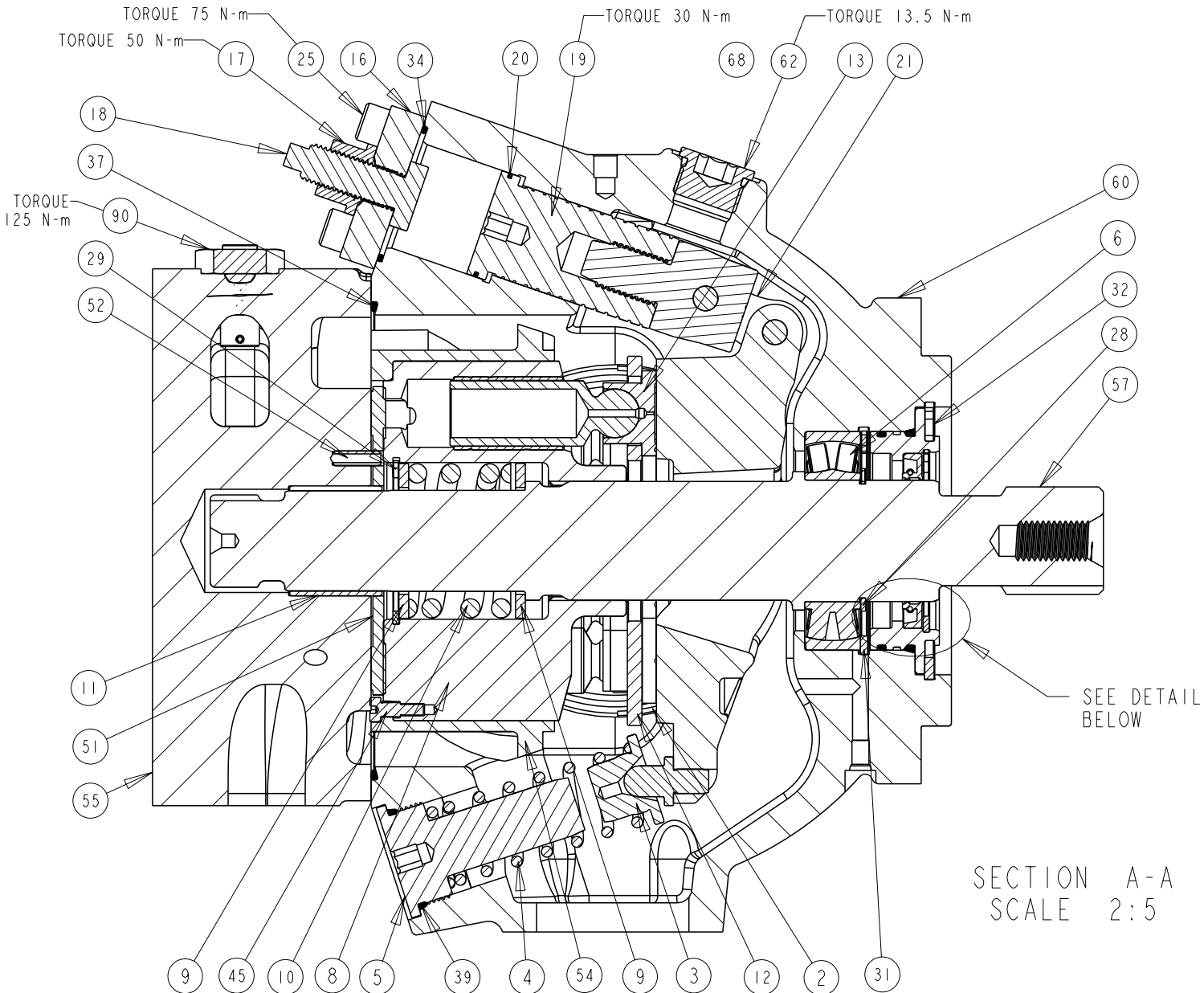
TITLE	DRAWING NUMBER	REVISION	STATUS	SHEET
SERVICE PARTS P3145 DESIGN SERIES II	P2-145-0404	A	PR	1 OF 7



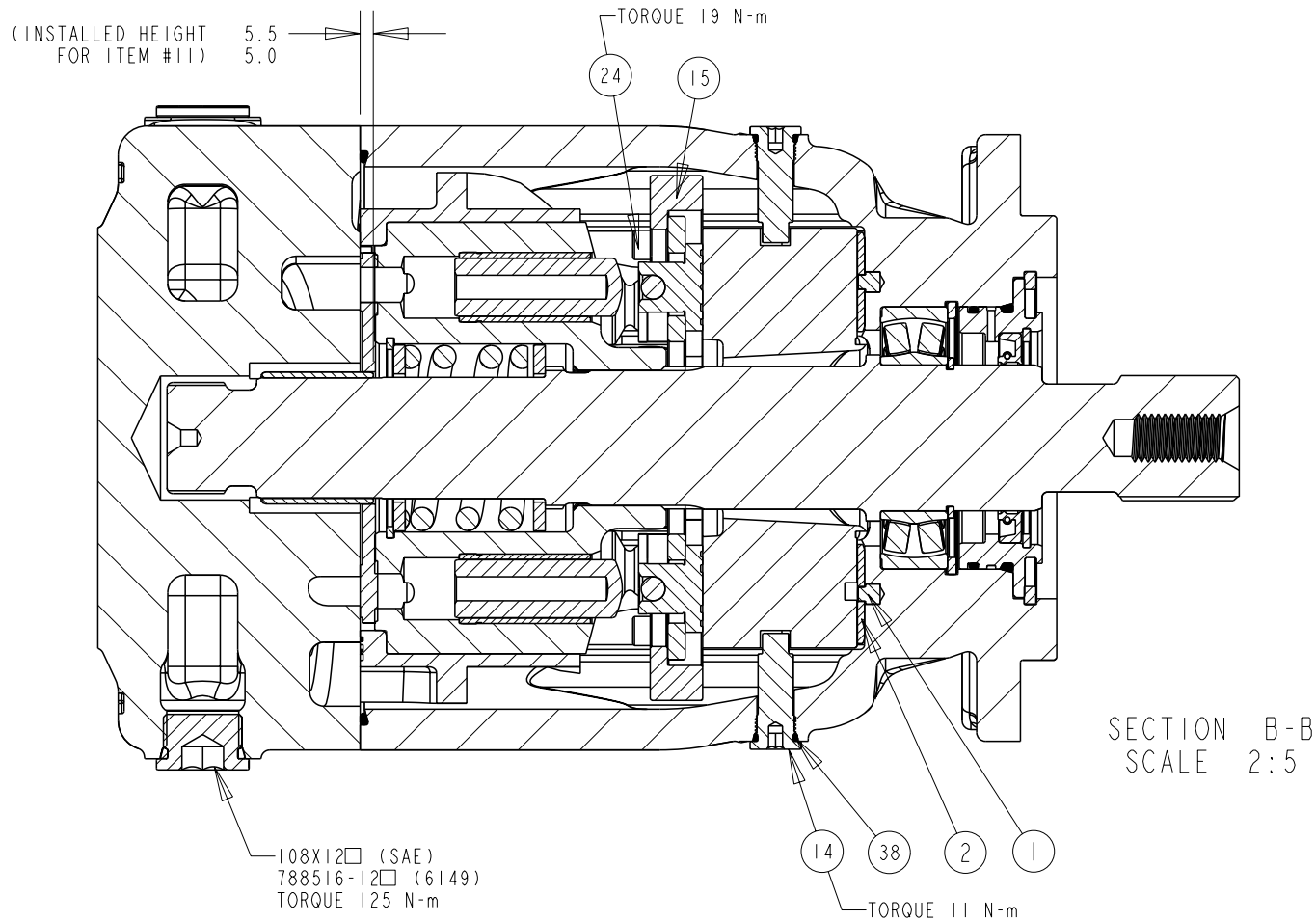
NOTES:
1 PUMP SHOWN IS A RIGHT HAND (CW) ROTATION PUMP. LEFT HAND (CCW) ROTATION PUMPS HAVE OUTLET GAUGE PORT REVERSED.



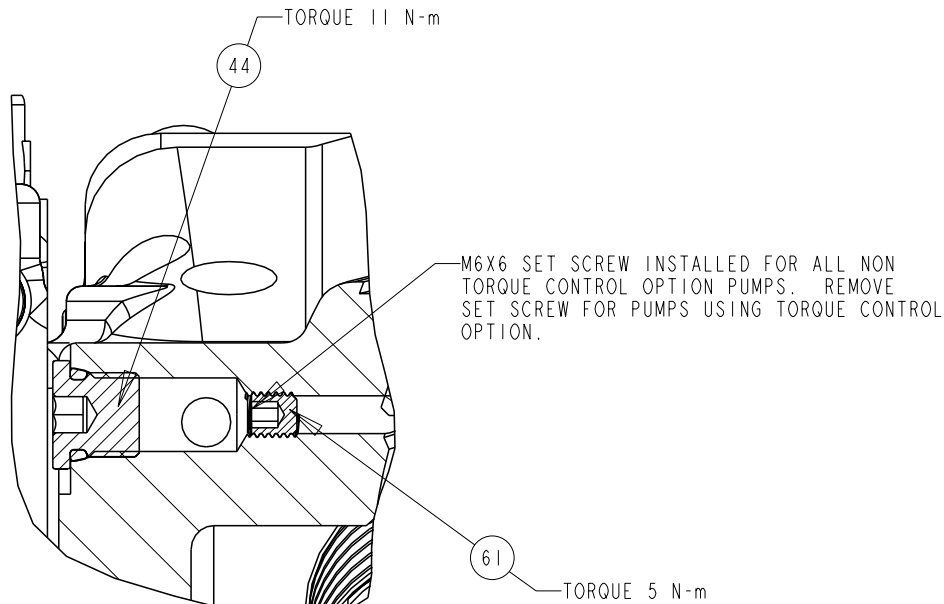
DRAWN BY	DATE	CHANGED BY	DATE	ECN NUMBER
E. BOONE	15APR02	B. LARKIN	23MAY02	133522



TITLE	DRAWING NUMBER	REVISION	STATUS	SHEET 2 OF 7
SERVICE PARTS P3145 DESIGN SERIES II	P2-145-0404	A	PR	



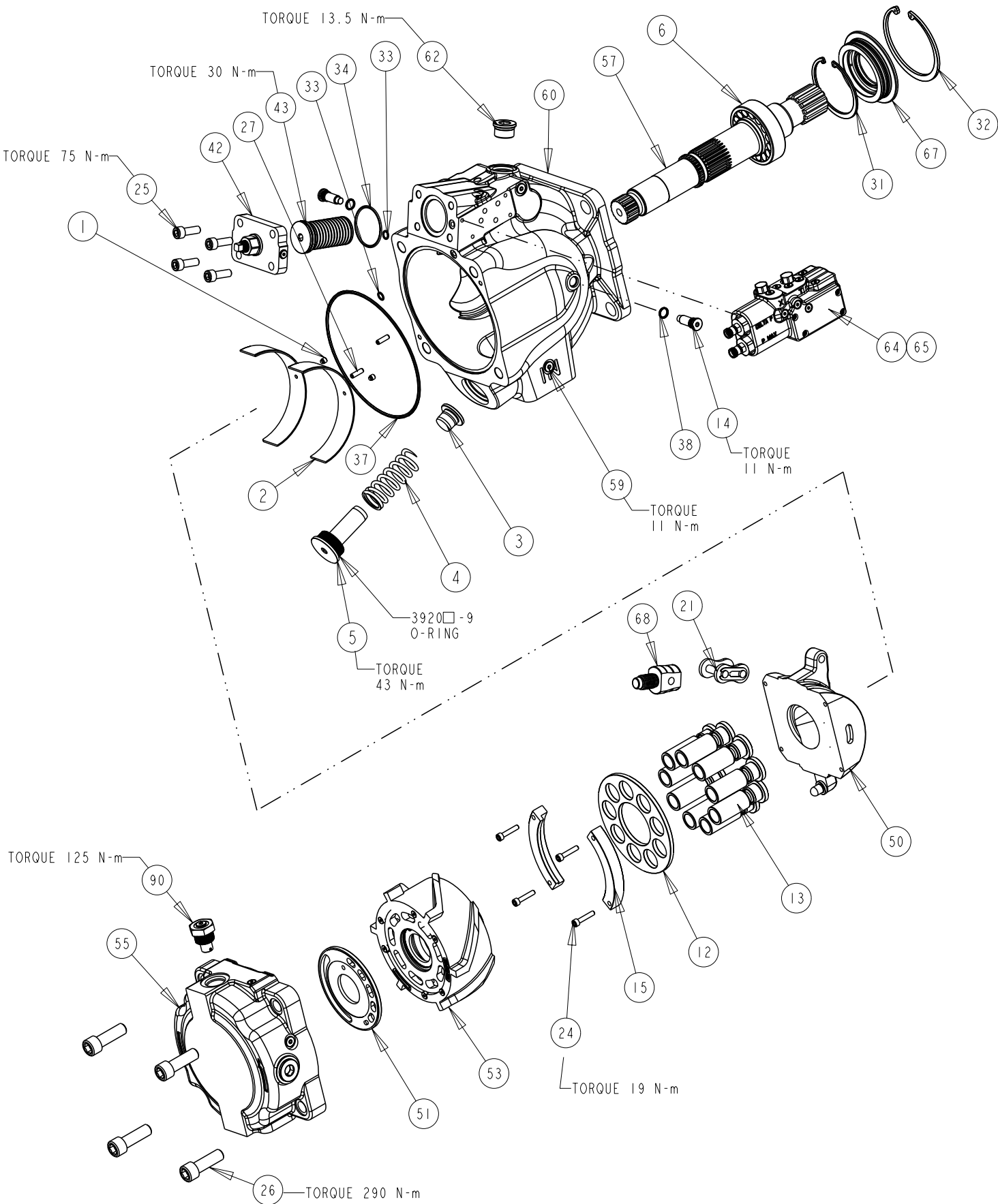
SECTION B-B
SCALE 2:5



SECTION C-C
SCALE 1:1



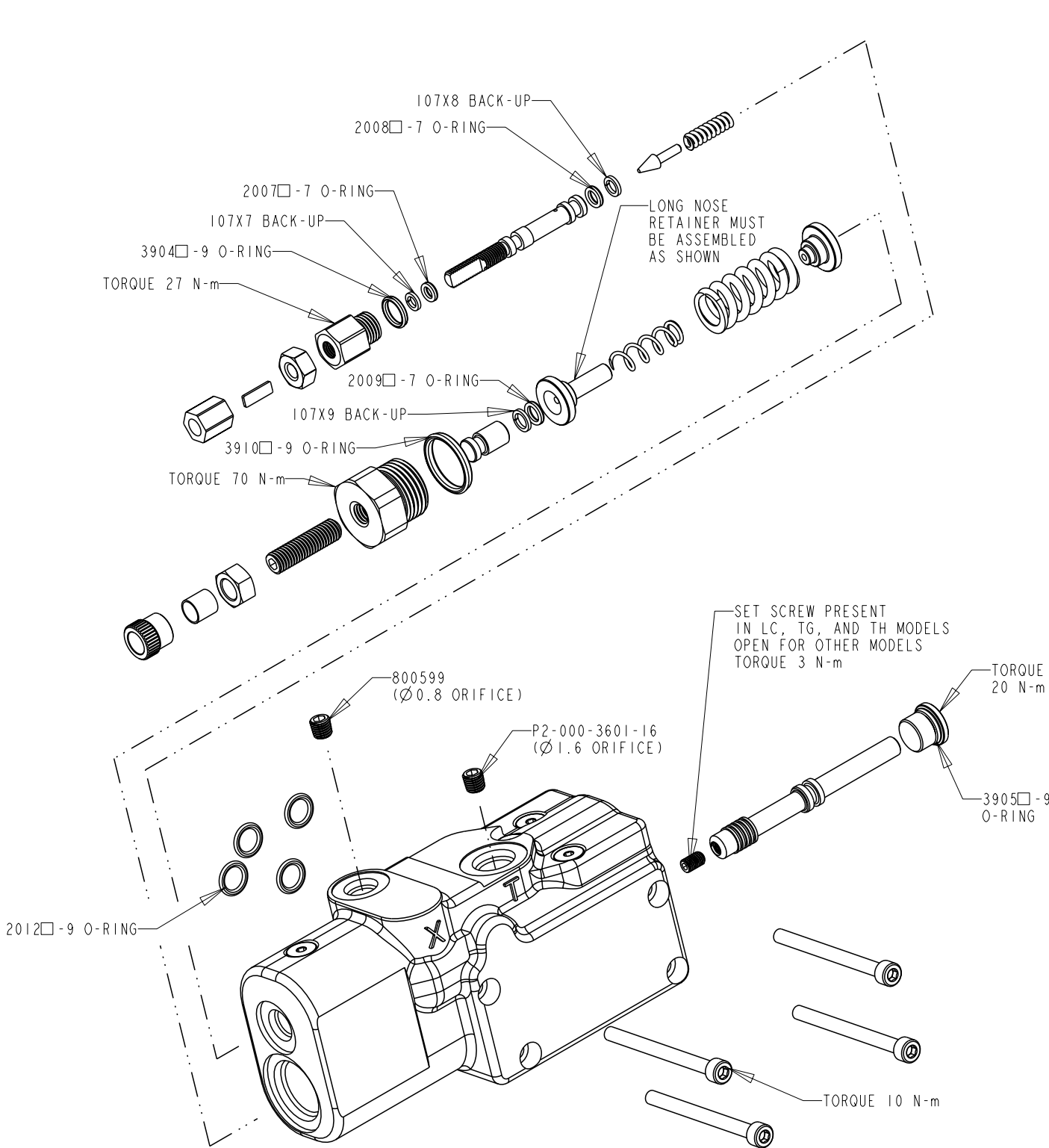
DRAWN BY	DATE	CHANGED BY	DATE	ECN NUMBER
E. BOONE	15APR02	B. LARKIN	23MAY02	133522



TITLE	DRAWING NUMBER	REVISION	STATUS	SHEET 3 OF 7
SERVICE PARTS P3145 DESIGN SERIES 11	P2-145-0404	A	PR	

COMPENSATOR KITS

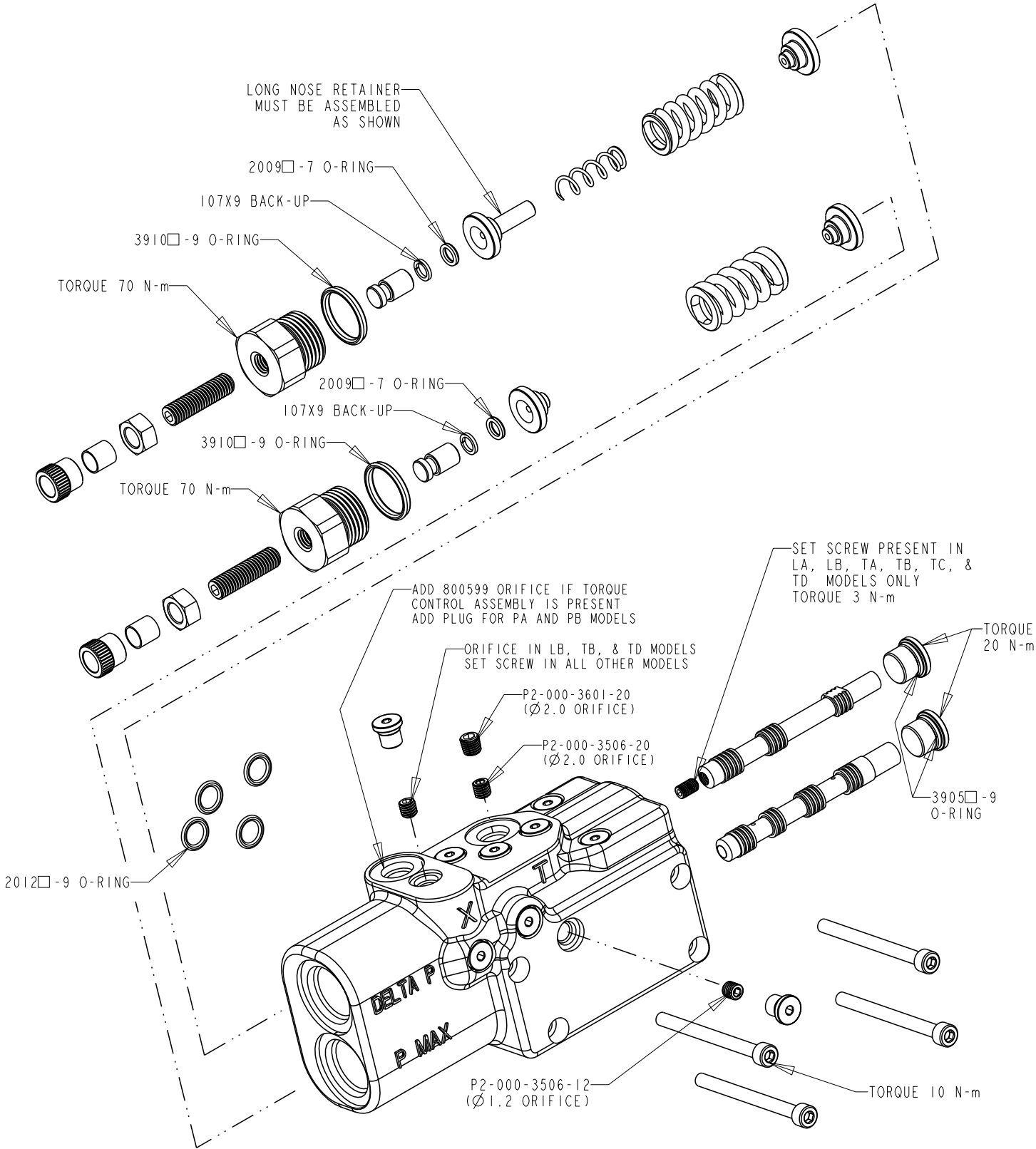
SINGLE SPOOL OPTIONS - ITEM 64



DRAWN BY	DATE	CHANGED BY	DATE	ECN NUMBER
E. BOONE	15APR02	B. LARKIN	23MAY02	133522

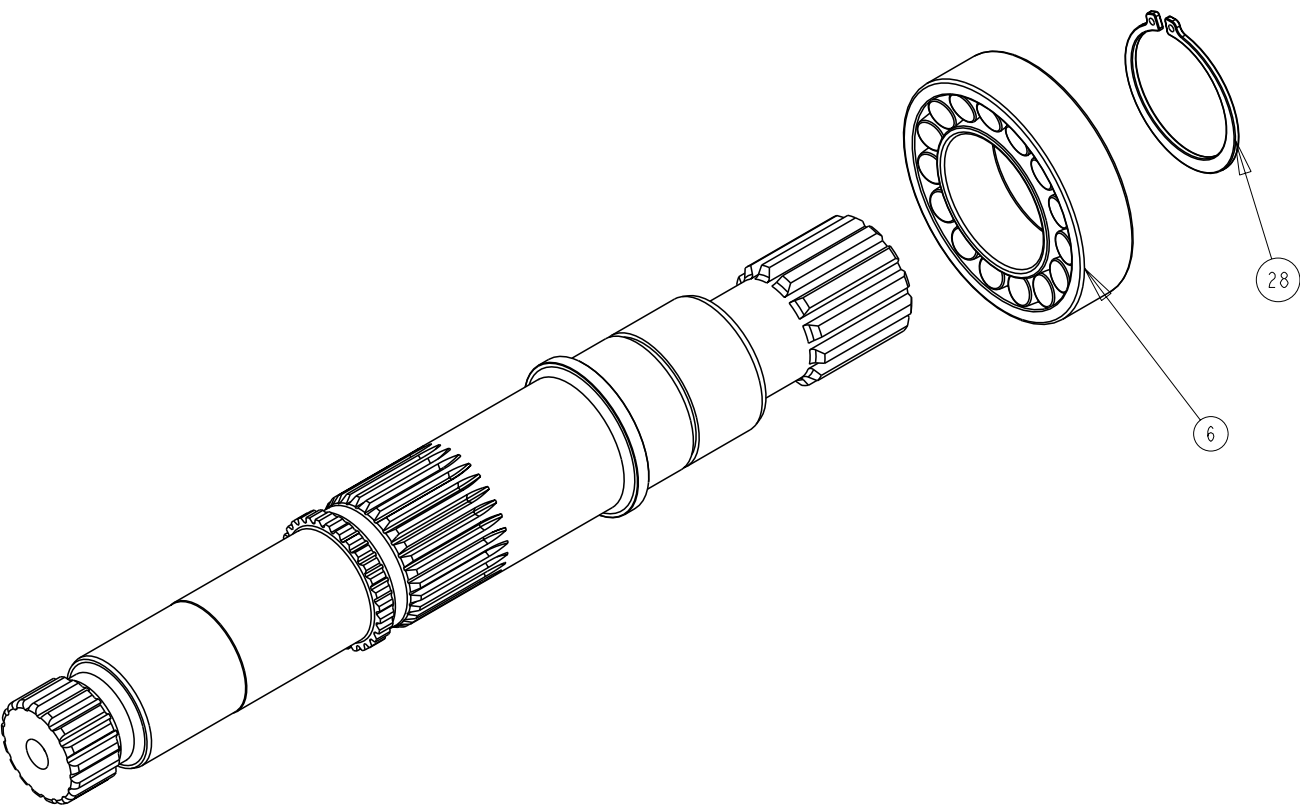
COMPENSATOR KITS

DUAL SPOOL OPTIONS - ITEM 65



TITLE	DRAWING NUMBER	REVISION	STATUS	
SERVICE PARTS P3145 DESIGN SERIES 11	P2-145-0404	A	PR	SHEET 5 OF 7

SHAFT ASSEMBLY KITS
ITEM 57

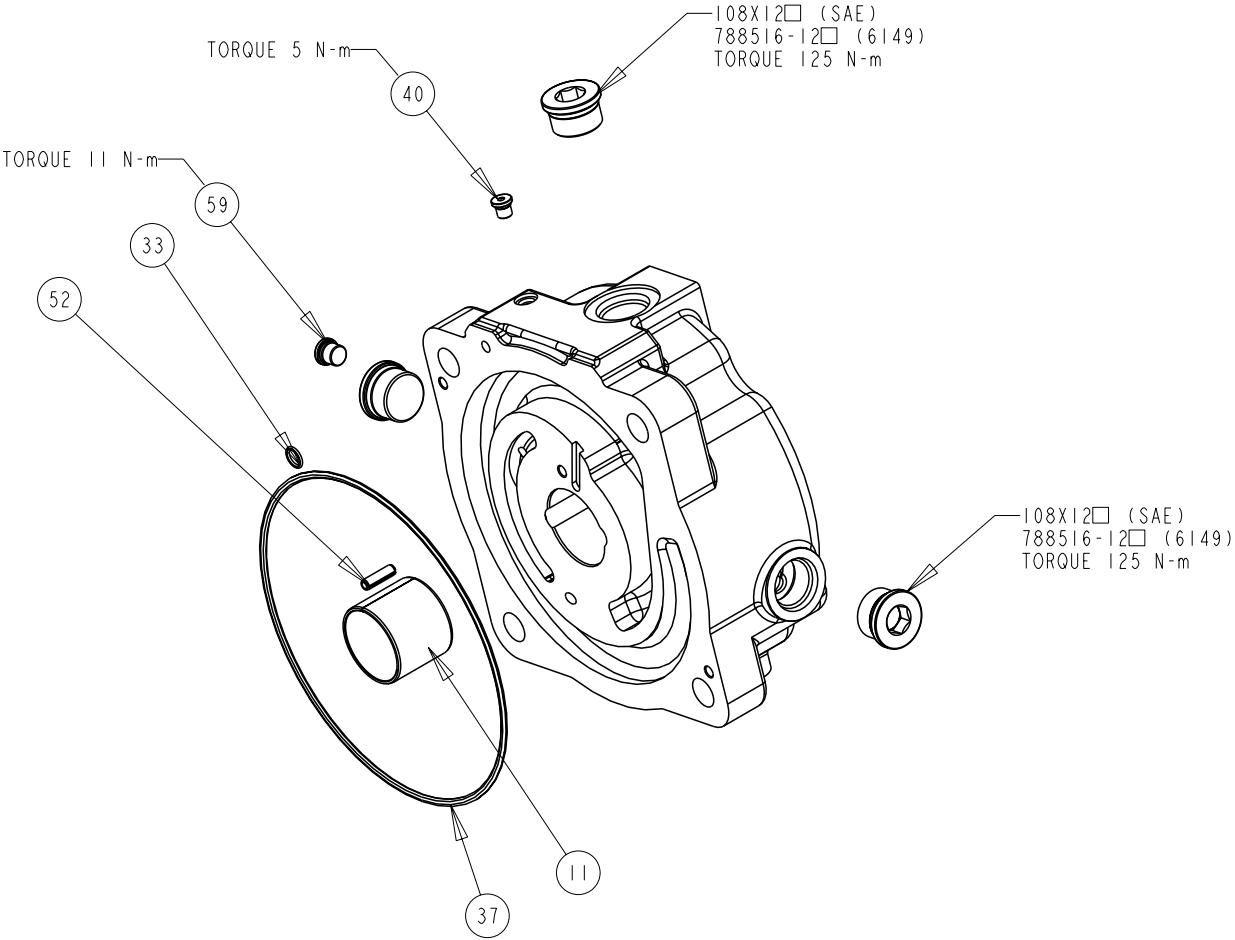


SHAFT ONLY	SHAFT ASSEMBLY	DESCRIPTION
P2-145-3525	P2-145-0225-36	C SPLINE THRU
P2-145-3519	P2-145-0225-40	D SPLINE THRU
P2-145-3533	P2-145-0225-46	C KEY THRU
P2-145-3535	P2-145-0225-48	CC KEY THRU
P2-145-3537	P2-145-0225-50	D KEY THRU
P2-145-3520	P2-145-0225-56	C SPLINE THRU NO UNDERCUT
P2-145-3546	P2-145-0225-60	D SPLINE THRU NO UNDERCUT



DRAWN BY	DATE	CHANGED BY	DATE	ECN NUMBER
E. BOONE	15APR02	B. LARKIN	23MAY02	133522

COVER ASSEMBLY KITS
ITEM 55

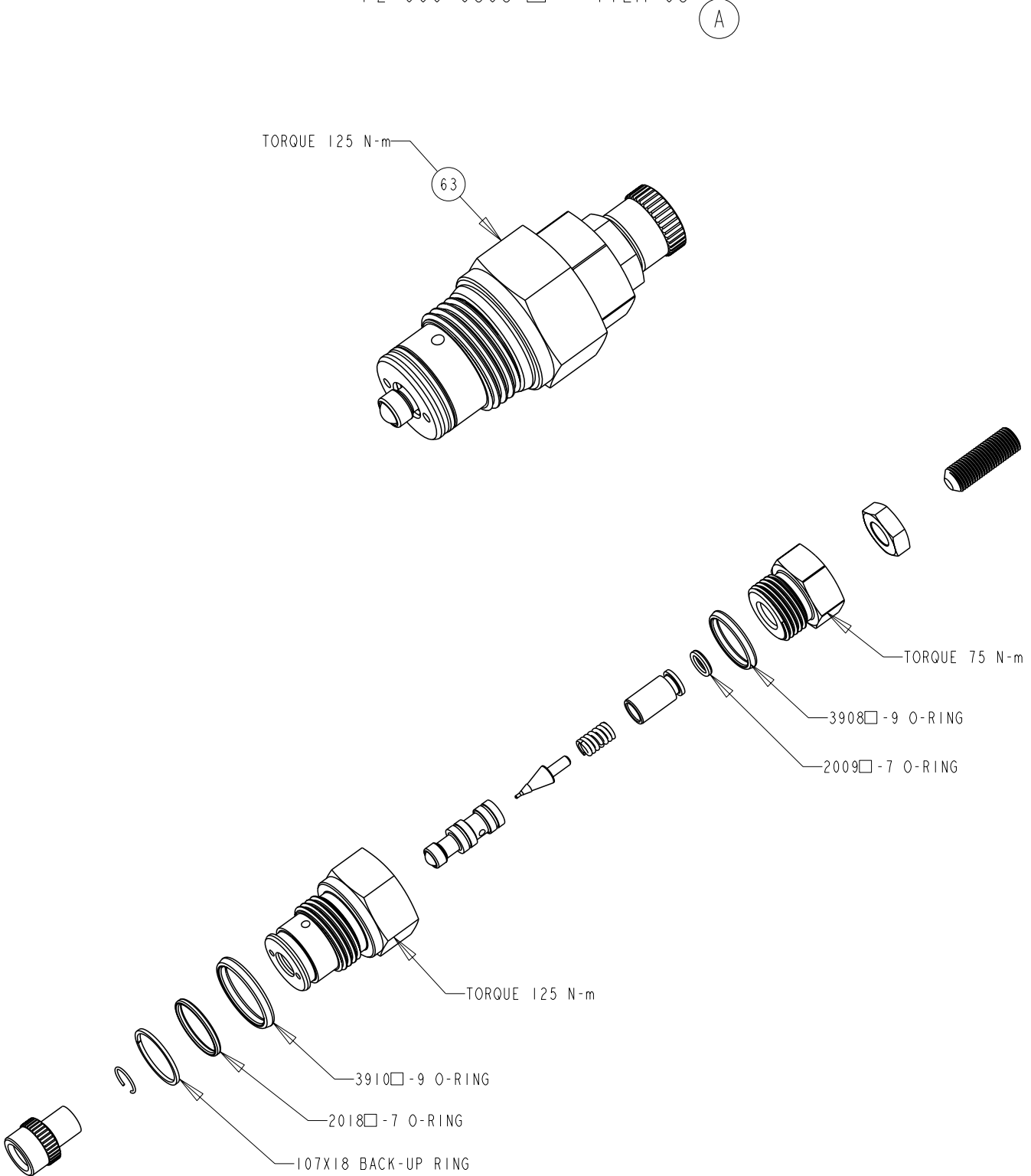


COVER ONLY	COVER ASSEMBLY	DESCRIPTION
P2-145-1015-01	P2-145-0226-09□	SIDE PORT, CCW, UNC
P2-145-1015-02	P2-145-0226-10□	SIDE PORT, CCW, UNC, THRU
P2-145-1015-03	P2-145-0226-11□	SIDE PORT, CCW, METRIC
P2-145-1015-04	P2-145-0226-12□	SIDE PORT, CCW, METRIC, THRU
P2-145-1016-01	P2-145-0226-13□	SIDE PORT, CW, UNC
P2-145-1016-02	P2-145-0226-14□	SIDE PORT, CW, UNC, THRU
P2-145-1016-03	P2-145-0226-15□	SIDE PORT, CW, METRIC
P2-145-1016-04	P2-145-0226-16□	SIDE PORT, CW, METRIC, THRU



TITLE	DRAWING NUMBER	REVISION	STATUS	
SERVICE PARTS P3145 DESIGN SERIES II	P2-145-0404	A	PR	SHEET 6 OF 7

TORQUE CONTROL CARTRIDGE P2-000-0803 □ - ITEM 63



DRAWN BY	DATE	CHANGED BY	DATE	ECN NUMBER
E. BOONE	15APR02	B. LARKIN	23MAY02	133522

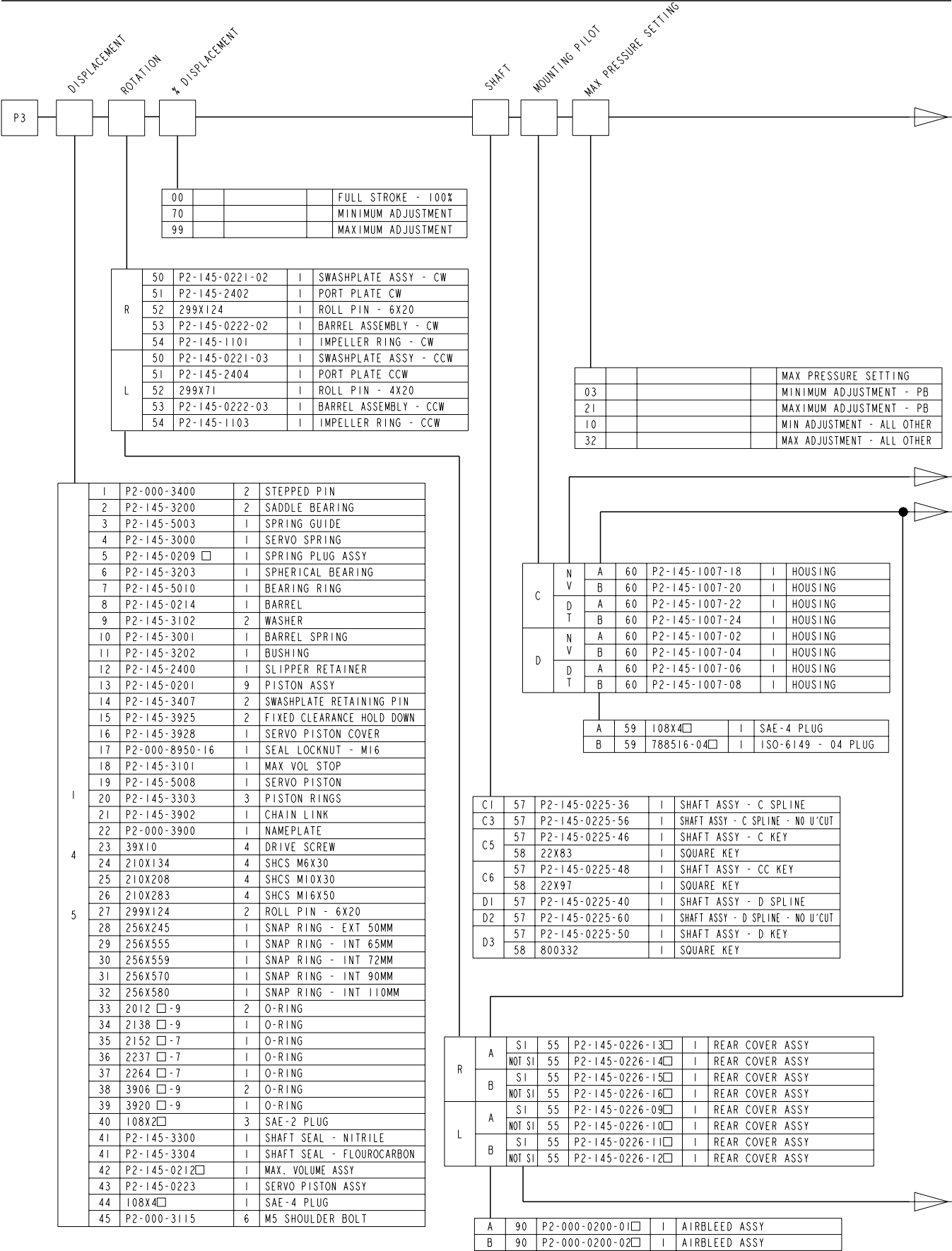
ASSEMBLY, DIS-ASSEMBLY AND REPAIR NOTES

- DISASSEMBLY STEPS FOR ENTIRE PUMP
1. REMOVE COVER SCREWS AND COVER
 2. REMOVE IMPELLER SCREWS AND IMPELLER
 3. DE-STROKE PUMP TO MINIMUM ANGLE WITH MAX VOLUME SCREW
 4. REMOVE FIXED CLEARANCE HOLD DOWN SCREWS AND HOLD DOWN PARTS
 5. REMOVE ROTATING GROUP (BARREL, SLIPPER RETAINER AND PISTONS)
 6. REMOVE SHAFT SEAL CARRIER
 7. REMOVE SHAFT
 8. REMOVE BIAS SPRING PLUG, SPRING AND RETAINER
 9. REMOVE MAX. VOLUME ASSY
 10. REMOVE SERVO PISTON ASSY.
 11. REMOVE SWASHPLATE ASSEMBLY

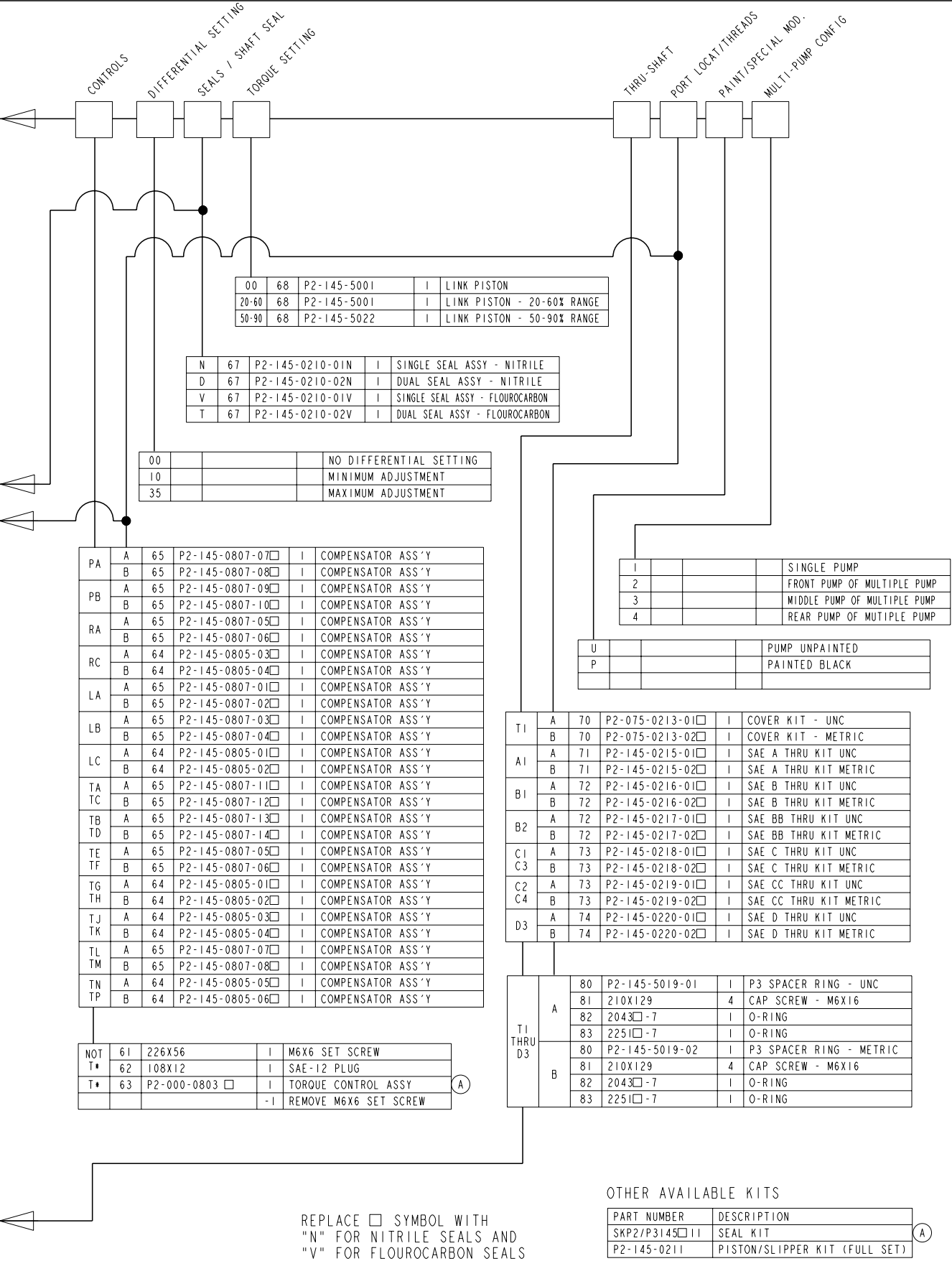
- SHAFT SEAL REPLACEMENT
1. REMOVE SEAL CARRIER ONLY
 2. REMOVE OLD SEAL
 3. INSPECT SHAFT
 4. IF SHAFT IS WORN INSTALL NEW SEAL IN INNER LOCATION FOR SINGLE SEAL APPLICATIONS (SEE SHEET 1). REPLACE SHAFT FOR DUAL SEAL APPLICATIONS



TITLE	DRAWING NUMBER	REVISION	STATUS	
SERVICE PARTS P3145 DESIGN SERIES 11	P2-145-0404	A	PR	SHEET 7 OF 7



DRAWN BY	DATE	CHANGED BY	DATE	ECN NUMBER
E. BOONE	15APR02	B. LARKIN	23MAY02	133522



REPLACE ☐ SYMBOL WITH
"N" FOR NITRILE SEALS AND
"V" FOR FLOUROCARBON SEALS

